

Reminder → Point 8 - PM85 lift replacement:

- From 16th Decembre to 23rd February
- Access of people (only) through PZ85 – LHCB
- Material transport with dedicated containers
- Urgent issues contact S. Pelletier (163380)

Information panels reminding the procedure to use the stairs in the over pressurized module will be put at the underground and surface doors.

safe areas, protecting you from fire and gas during your escape towards the surface. They are equipped with fire doors and are over-pressurized.

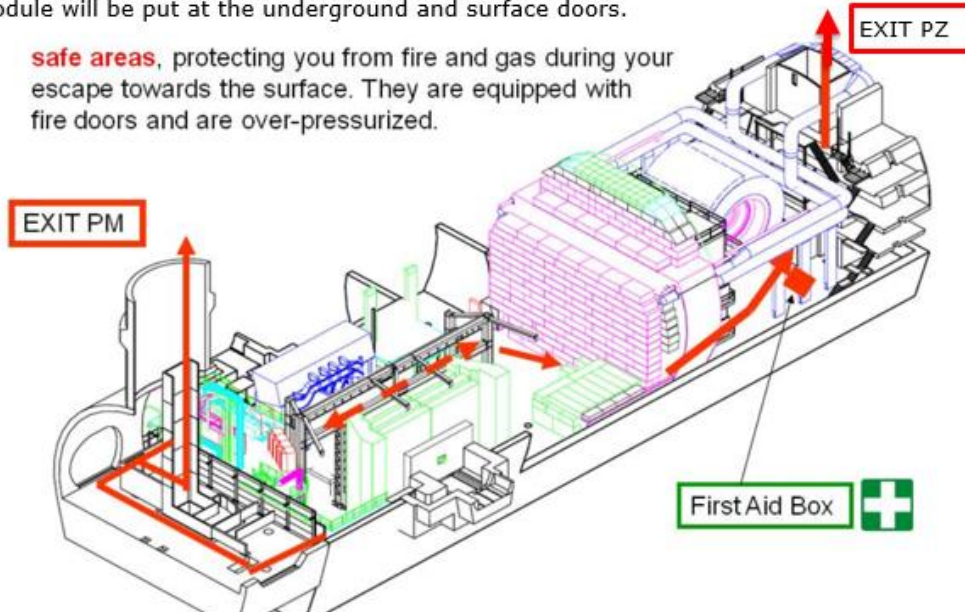


Figure 3 - Location of PM85 and PZ85 for the evacuation path

3.3 TECHNICAL CONSTRAINTS

3.3.1 TOOLING AND EQUIPMENT HANDLING

All tooling and pieces of equipment needed in the LHC machine underground areas of P8 will have to be handled by the EN/HE group through the SD overhead crane (see Figure 4).

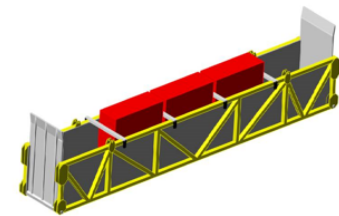


Figure 4 – Container for handling material through PM85

A daily presence of an EN-HE handling team will be ensured between:

- 7h30 and 9h
- 13h15 and 14h
- 16h45 and 17h15

The usual safety perimeter (including UL84 and UL86) will be put in place and respected at all times, which implies no circulation between the LHC machine (US85) and the LHCB cavern (UX85B) during the 10 minutes of a handling operation.

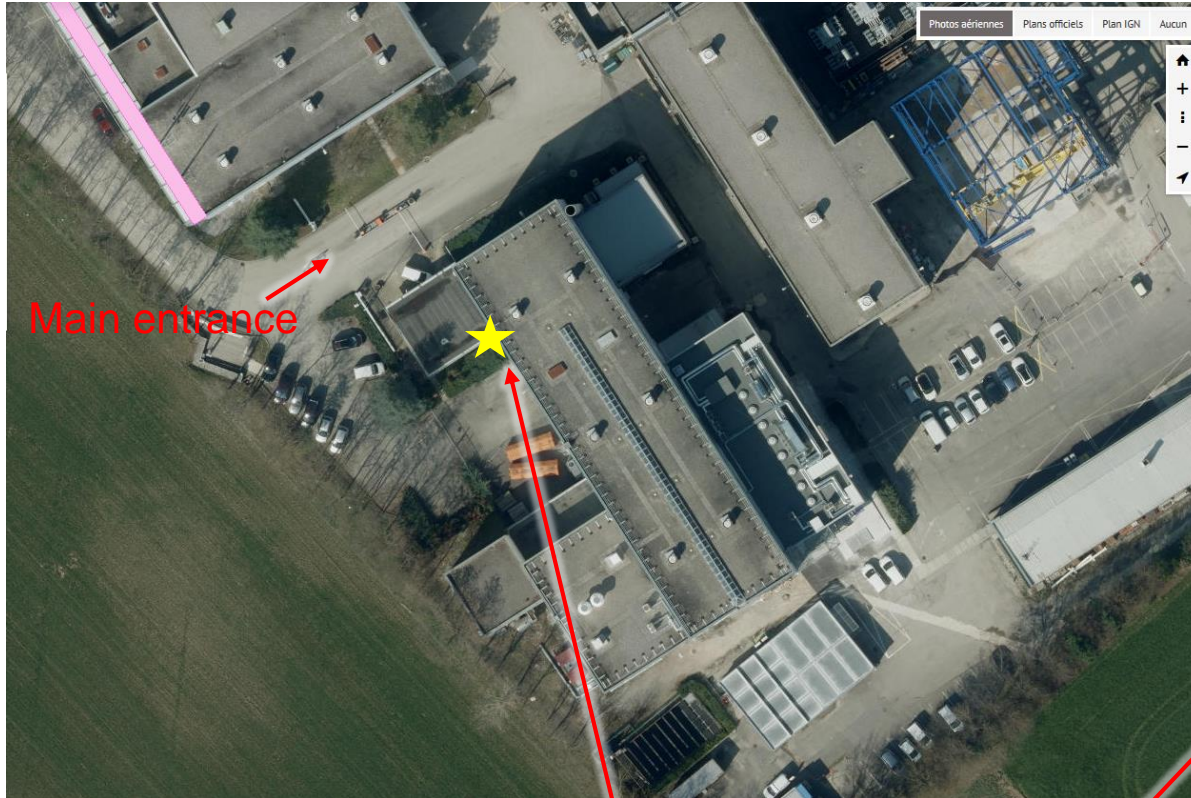
For handling support requests, usage of the [usual EDH form](#) remains the standard procedure.

In exceptional circumstances, handling operations can be performed during normal working hours, but the usual safety perimeter must be put in place and respected.

Usage of the "LHCB" MAD YCAMP01=PZ85 will be restricted only to LHCB users.

Reminder → Point 8 - PM85 lift replacement:

Access in SX8



Access door to SX8

If needed, call Kevin Bibancos : 169761